

Environment Protection Authority South Australia

SA environmental compliance changes and key reforms for 2021-2022

24 February 2021

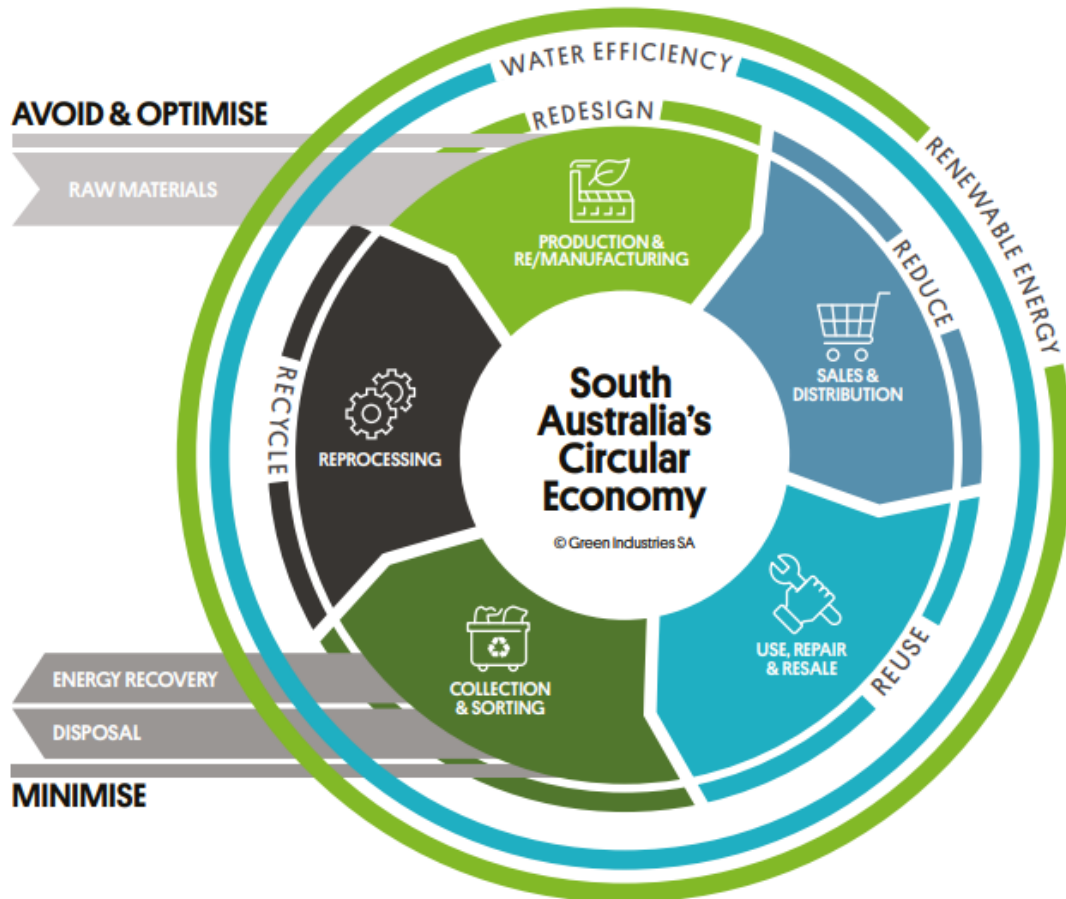
Name: Michelle Jones

Position: Principal Policy Officer

www.epa.sa.gov.au



Overview



- New SA Waste Strategy 2020-25
- Grants and funding opportunities
- Ban on single-use plastics
- Mass Balance Reporting for waste depots
- Waste levy collection reforms
- Container Deposit Scheme review
- New activities of environmental significance
- Site Contamination Policy and planning reforms

SA's Waste Strategy 2020-2025

Targets:

- Zero avoidable waste to landfill by 2030
- 5% reduction on per capita waste generation on a 2020 baseline
- Regional Waste Management Plans for all regional areas by 2023
- Metropolitan resource recovery targets:

Sector	2018-19	2020 target	2025 target
MSW	57%	70%	75%
C&I	88%	80%	90%
C&D	91%	90%	95%

[SA Food Waste Strategy](#) to be released this year.

www.greenindustries.sa.gov.au/resources/sa-waste-strategy-2020-2025



Grants & Funding Opportunities



Circular Economy Market Development Grants:

- Up to \$100,000 per applicant
- Applications close on 30 June 2021

Recycling Modernisation Grants:

- Part of the Australian Government's \$190 million Recycling Modernisation Fund
- Grants from \$500,000 to \$10 million available (to cover up to 50% of costs)
- Applications close 26 February 2021

Further information: <https://www.greenindustries.sa.gov.au/funding/>

Ban on single-use plastics



- Banned from 1 March 2021:
 - Single-use plastic straws, cutlery & stirrers
- Banned from 1 March 2022:
 - Polystyrene cups, bowls, plates and clamshell containers
- Ban applies to sale, supply or distribution
- Ban includes oxo-degradable plastic products
- Penalties up to \$20,000 and expiation up to \$1,000 apply
- Exemptions apply for people with a disability or medical needs

Further information: [Single-use and Other Plastic Products \(Waste Avoidance\) Act 2020](#)

www.replacethewaste.sa.gov.au

[EPA Guideline for assessing plastic products](#)

Mass Balance Reporting

- Mass balance reporting commences **1 July 2021**
- Applies to waste facilities receiving over 20,000 tonnes of waste p.a.

Mass Balance Reporting

Monthly reports
Annual surveys & stocktakes

INFORMS

Stockpile & material flow trends

- Informs if EPA action is needed, e.g.:
 - o Management plan
 - o Stockpile limit
 - o Financial assurance
 - o Compliance for breach
- Informs Government early if a sector-wide issue is arising

Resource recovery opportunities

- Site opportunities
- Sector-wide opportunities

Levy collection at landfill

Market development



Effective recovery



Contamination



www.epa.sa.gov.au/environmental_info/waste_recycling/mass-balance-reporting

Waste levy collection reform

- Changes to solid waste levy collection commence 1 December 2021
- Applies to South Australian landfills
- Key features:
 - Clarity on application of levy to daily cover
 - Application of levy to unapproved operational use
 - Application of levy to unauthorised stockpiling
 - Improved powers to recover unpaid levy
 - Review of penalty provisions

www.epa.sa.gov.au/business_and_industry/waste-levy



Container Deposit Scheme review



- 2019 Scoping Paper “Improving SA’s Recycling Makes Cents” identified four key opportunities
 - strengthening CDS role in SA’s circular economy;
 - container scope
 - Governance
 - manner of community participation
- Discussion paper to be released this year.
- Working with other jurisdictions to maintain national alignment of schemes.

www.epa.sa.gov.au/environmental_info/waste_recycling/container_deposit

Activities of environmental significance

New activities of environment significance will commence on **1 April 2021**:

- **Poultry farms:** (over 13,500m²) Regulate noise, odour, waste & stormwater management
- **Pumped hydro:** (with output capacity of over 30MW) Regulate noise & wastewater
- **Hydrogen production:** (with production capacity of 100 tonnes p.a.) Regulate noise & wastewater

https://www.epa.sa.gov.au/business_and_industry/licences



Site Contamination Policy

- Consultation underway on draft *Environment Protection (Site Contamination) Policy 2020*
- Objectives:
 - Implement the *National Environment (Assessment of Site Contamination) Protection Measure 1999*
 - Greater certainty and consistency in the assessment of site contamination in SA
- Mandatory guidelines to be released for consultation mid-2021
- Consultation on EPP and guidelines to close in the second half of next year.



engage.epa.sa.gov.au/assessment-site-contamination-policy

Site contamination planning reforms

Objectives:

- Support urban renewal within metropolitan Adelaide
- Identify site contamination early in the planning process
- Protect the community from potential health impacts

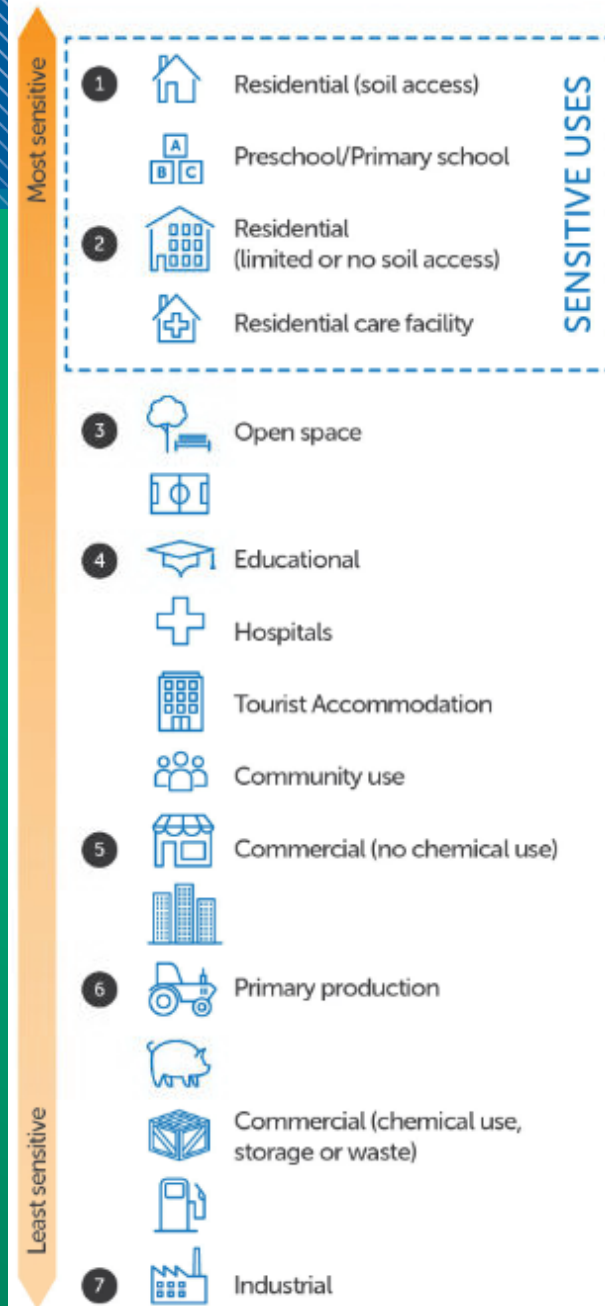
Reforms:

- Site Contamination policies within the Planning and Design Code
- Classification of developments for the purposes of SC
- Prescribed classes of development for referral for SC assessment

If you're changing land use to a more sensitive use you need to investigate potential site contamination as part of your planning application.

plan.sa.gov.au

Land use sensitivity hierarchy



Thank you

**Environment Protection Authority
South Australia**

Level 2, GHD building, 211 Victoria Square
ADELAIDE SA 5000

Michelle Jones
Principal Policy Officer, SA EPA
(08) 8204 2006
michelle.jones4@sa.gov.au

